

BOUNDARY CURVE DATA

① Δ = 52°17'58"	② Δ = 10°58'09"	③ Δ = 30°56'25"	④ Δ = 13°32'35"
D = 8.98447'	D = 13.32460'	D = 17.36236'	D = 5.56270'
R = 430.00'	R = 430.00'	R = 330.00'	R = 1030.00'
L = 582.11'	L = 82.32'	L = 178.20'	L = 243.46'

⑤ Δ = 29°57'58"	⑥ Δ = 09°01'33"	⑦ Δ = 05°53'41"
D = 25.05024'	D = 3.733335'	D = 1.681977'
R = 947.00'	R = 1534.70'	R = 537.42'
L = 429.18'	L = 241.76'	L = 55.29'

CENTERLINE CURVE DATA

⑧ Δ = 09°36'30"	⑨ Δ = 05°15'00"	⑩ Δ = 56°46'59"
D = 7.44101'	D = 3.819722'	D = 19.09859'
R = 770.00'	R = 300.00'	R = 300.00'
L = 129.13'	L = 153.51'	L = 313.02'

⑪ Δ = 116°38'37"	⑫ Δ = 09°41'47"	⑬ Δ = 09°41'47"	⑭ Δ = 14°59'49"
D = 24.38189'	D = 16.370222'	D = 16.370222'	D = 19.99859'
R = 235.00'	R = 350.00'	R = 350.00'	R = 300.00'
L = 478.42'	L = 59.23'	L = 59.23'	L = 78.52'

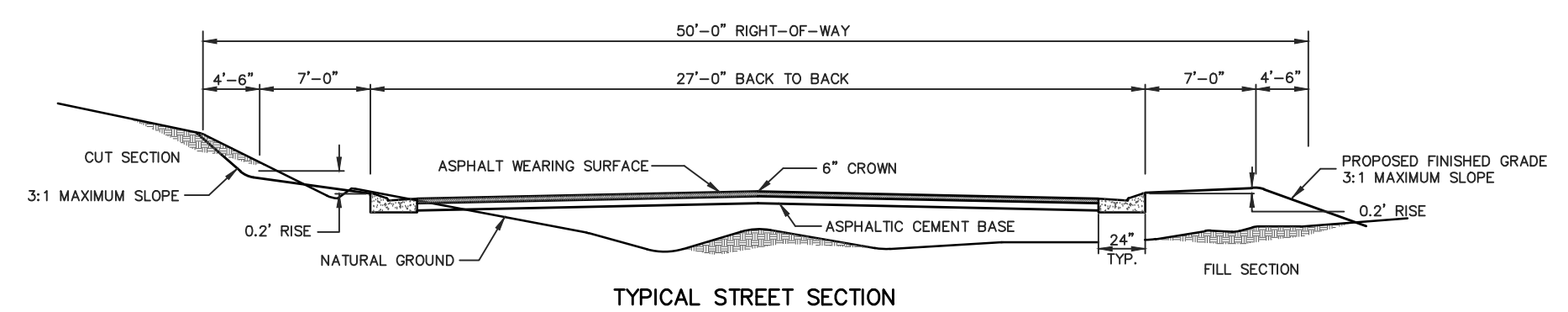
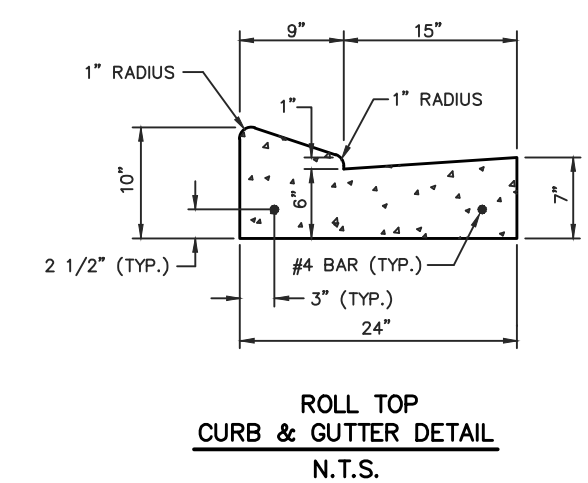
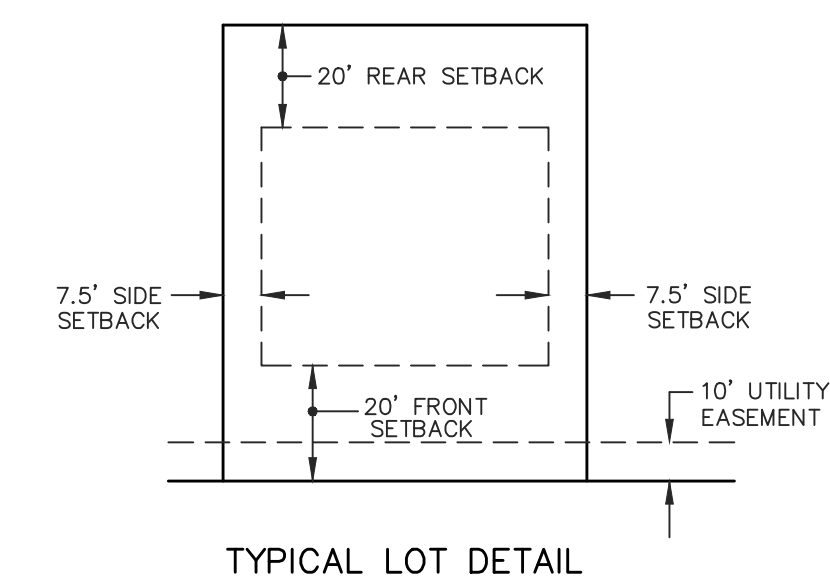
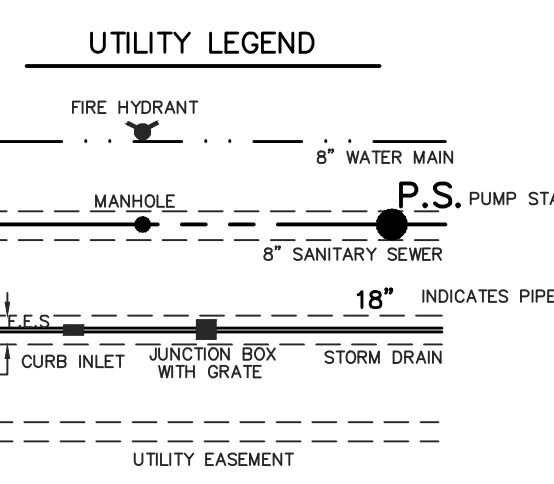
⑮ Δ = 21°19'26"	⑯ Δ = 71°03'14"	⑰ Δ = 55°16'01"
D = 11.45916'	D = 24.91121'	D = 114.59167'
R = 500.00'	R = 230.00'	R = 50.00'
L = 186.09'	L = 285.23'	L = 48.23'

- CENTERLINE INTERSECTIONS**
- (1) STA. 3+05.50 HERON'S BAY DRIVE = STA. 10+56.53 HERON'S BAY CIRCLE
 - (2) STA. 10+13.16 HERON'S BAY CIRCLE = STA. 1+00.00 HERON'S BAY CIRCLE
 - (3) STA. 25+51.47 HERON'S BAY CIRCLE = STA. 9+23.27 HERON'S BAY CIRCLE

BOUNDARY INFORMATION

NUMBER	DIRECTION	DISTANCE
L1	S40°07'38"E	15.52'
L2	S11°31'43"E	144.75'
L3	S10°05'57"W	115.37'
L4	S33°04'10"W	107.68'
L5	S55°57'00"W	142.21'
L6	S43°50'22"W	81.63'
L7	S37°48'12"W	183.32'
L8	N77°43'03"W	10.55'
L9	N60°15'26"W	369.90'
L10	N66°31'30"W	70.35'
L11	N72°56'50"W	66.23'
L12	N79°32'48"W	63.25'
L13	N84°16'07"W	274.20'
L14	S05°43'53"W	150.00'
L15	S8°16'07"E	265.11'
L16	S80°30'08"E	60.28'
L17	S70°53'19"E	213.35'
L18	S72°30'24"E	68.05'
L19	S62°32'05"E	107.51'
L20	S00°12'57"E	111.81'
L21	S06°35'45"W	87.67'
L22	S01°47'46"W	157.06'
L23	S46°32'04"W	49.19'
L24	S54°52'51"W	71.29'
L25	S43°52'03"E	26.15'
L26	S80°48'08"E	59.03'
L27	N75°40'21"E	56.70'
L28	N70°05'33"E	84.43'
L29	S72°31'7"E	74.75'
L30	S75°57'15"E	73.09'
L31	S43°33'17"E	41.04'
L32	S31°16'10"W	65.72'
L33	S21°32'44"W	57.23'
L34	S06°04'35"E	52.89'
L35	S22°38'58"E	73.47'

- NOTES:**
1. THIS SUBDIVISION LIES WITHIN THE LIMITS ESTABLISHED FOR ZONE "X" (NO SHADING) ACCORDING TO FIRM MAP NUMBER 28089C0395 F, EFFECTIVE MARCH 17, 2010.
 2. DIMENSIONS ALONG CURVES ARE CHORD DISTANCES.
 3. AREA = 30.91 ACRES +/-
 4. CONCRETE MONUMENTS WILL BE PLACED AT ALL CORNERS OF THE SUBDIVISION POST-CONSTRUCTION.
 5. COMMON AREAS AND EASEMENTS SHALL BE MAINTAINED BY THE HOME OWNERS ASSN. OR ADJACENT LOT OWNER, WHICHEVER IS APPLICABLE AS OUTLINED IN THE COVENANTS.
 6. DATE OF FIELD SURVEY: 4-28-20



DEVELOPER
CAROLINE LLC
 607 HIGHLAND COLONY PARKWAY, SUITE 300
 MADISON, MISSISSIPPI 39110

DRAWING NO. CAMDEN PT. 4

H D LANG AND ASSOCIATES, INC.
 POST OFFICE BOX 16085
 JACKSON, MISSISSIPPI 39236
 601-362-4886

PROJECT
 PRELIMINARY PLAT
 OF
HERON'S BAY OF CAROLINE

LOCATION
 SITUATED IN THE
 NORTHWEST 1/4 OF
 SECTION 11, TOWNSHIP 8 NORTH - RANGE 1 EAST
 MADISON COUNTY, MISSISSIPPI

DATE	REVISION	BY
06-25-20	COUNTY COMMENTS	JBH

DRAWN BY: D.L.M.
 DATE: 5-15-20
 SCALE: 1" = 100'
 BOOK: PAGE:
 PROJECT NO.: 00-199